

BREWIS MAXI SWIVEL

Engineered specifically for HDD applications, Century's Brewis line of swivels are used in the most demanding directional drilling conditions in the world. Incorporating key design features like the SKF Explorer Series Bearing, these swivels excel in operating conditions that experience heavy loads, difficulty in establishing or maintaining housing alignment or shaft deflection. Available from 44 to 550 US Tons the Century Brewis line of swivels have been tested and proven in the field by the most respected HDD contractors in North America.

Design Features

- Machined From Solid 4145 Material
- Box by Clevis or Clevis by Clevis
- Re-Buildable Design

SKF Explorer Series Bearings

- SKF Explorer Spherical Roller Thrust Bearing to withstand extreme thrust loads
- SKF Spherical Roller Bearings (x2) to keep shaft in complete alignment when side load pressures are applied

Patented Sealing System

- Four independent and redundant seals
- Water and debris kept from critical bearing assemblies

Side Grease Ports

- Power Grease to flush contaminants from bearings

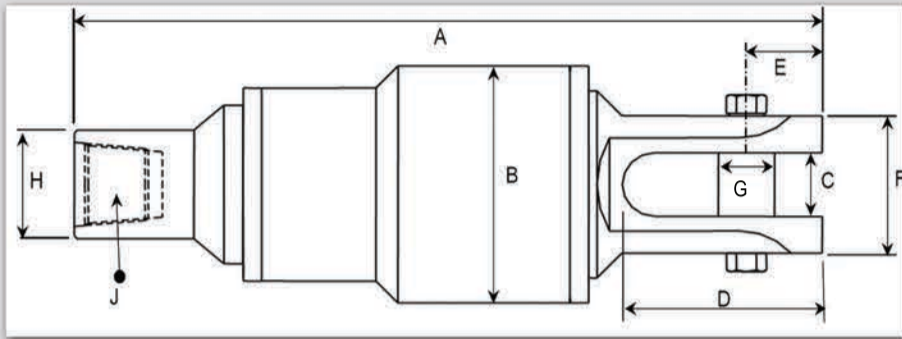
Ratings

- Dynamic Pull ratings from 44 to 550 US Tons
- Static safety rating of 2.5 to 3 times the dynamic load rating

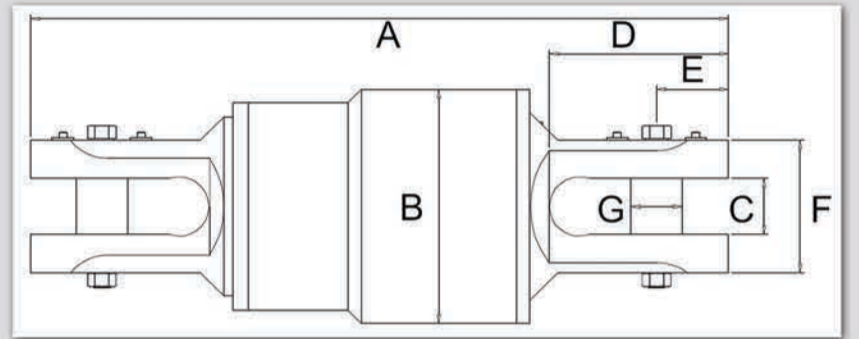


"Maximum Strength & Durability"

MAXI SWIVEL BOX BY CLEVIS CONNECTIONS



MAXI SWIVEL CLEVIS BY CLEVIS CONNECTIONS



Size	A Box - Clevis	A Clevis - Clevis	B	C	D	E	F	G	H Box - Clevis	J Box - Clevis	Bearing	Max Dynamic	Max Static	Ship Weight kg/lbs
44 US Tons														
mm	610.0	644.0	163.0	54.0	160.0	62.0	126.0	44.0	120.0	3 ½"	29412	390 kN	915 kN	75 kg
Inch	24.02	25.35	6.42	2.13	6.30	2.44	4.96	1.73	4.72	IF		44 Tons	103 Tons	165 lbs
58 US Tons														
mm	722.0	732.0	185.0	70.0	197.0	65.0	140.0	54.0	159.0	4 ½"	29414	520 kN	1250 kN	110 kg
Inch	28.43	28.82	7.28	2.76	7.76	2.56	5.51	2.13	6.26	IF		58 Tons	141 Tons	243 lbs
83 US Tons														
mm	847.0	892.0	225.0	83.0	237.5	91.0	170.0	63.0	159.0	4 ½"	29417	735 kN	1800 kN	160 kg
Inch	33.35	35.12	8.86	3.27	9.35	3.58	6.69	2.48	6.26	IF		83 Tons	202 Tons	353 lbs
110 US Tons														
mm	899.0	932.0	260.0	83.0	235.0	90.0	170.0	63.0	159.0	4 ½"	29420	980 kN	2500 kN	200 kg
Inch	35.39	36.69	10.24	3.27	9.25	3.54	6.69	2.48	6.26	IF		110 Tons	281 Tons	441 lbs
154 US Tons														
mm	978.0	1031.0	315.0	89.0	262.0	102.0	180.0	75.6	159.0	4 ½"	29424	1370 kN	3450 kN	290 kg
Inch	38.50	40.59	12.40	3.50	10.31	4.02	7.09	2.98	6.26	IF		154 Tons	388 Tons	639 lbs
175 US Tons														
mm	1038.0		340.0	89.0	262.0	102.0	180.0	75.6	190.0	5 ½"	29426	1560 kN	4150 kN	360 kg
Inch	40.87		13.39	3.50	10.31	4.02	7.09	2.98	7.48	FH		175 Tons	467 Tons	794 lbs
210 US Tons														
mm	1174.0	1277.0	380.0	102.0	320.0	120.2	220.0	89.0	190.0	5 ½"	29430	1860 kN	5100 kN	525 kg
Inch	46.22	50.28	14.96	4.02	12.60	4.73	8.66	3.50	7.48	FH		209 Tons	573 Tons	1157 lbs
265 US Tons														
mm	1303.0	1422.0	430.0	102.0	321.0	120.0	240.0	89.0	229.0	6 5/8"	29434	2360 kN	6550 kN	750 kg
Inch	51.30	55.98	16.93	4.02	12.64	4.72	9.45	3.50	9.02	FH		265 Tons	736 Tons	1653 lbs
320 US Tons														
mm	1424.0	1580.0	470.0	127.0	398.0	159.0	280.0	114.0	229.0	6 5/8"	29438	2850 kN	8000 kN	1150 kg
Inch	56.06	62.20	18.50	5.00	15.67	6.26	11.02	4.49	9.02	FH		320 Tons	899 Tons	2535 lbs
382 US Tons														
mm	1460.0	1550.0	530.0	127.0	398.0	159.0	300.0	114.0	275.0	6 5/8"	29448	3400 kN	10200 kN	1380 kg
Inch	57.48	61.02	20.87	5.00	15.67	6.26	11.81	4.49	10.83	FH		382 Tons	1147 Tons	3042 lbs
455 US Tons														
mm	1598.0	1778.0	560.0	156.0	452.0	190.0	350.0	150.0	280.0	6 5/8"	29452	4050 kN	12900 kN	1600 kg
Inch	62.91	70.00	22.05	6.14	17.80	7.48	13.78	5.91	11.02	FH		455 Tons	1450 Tons	3527 lbs
550 US Tons														
mm	1622.0	1802.0	610.0	156.0	452.0	190.0	350.0	150.0	280.0	6 5/8"	29456	4900 kN	15300 kN	1820 kg
Inch	63.86	70.94	24.02	6.14	17.80	7.48	13.78	5.91	11.02	FH		551 Tons	1720 Tons	4012 lbs